

Omega Light

35% DC

TIG-AC/DC

TIG- Pulse

MMA



Omega 210

60% DC

TIG-AC/DC

TIG- Pulse

MMA



TIG Inverter

MAHE
Mahe in Germany

Processes

TIG-AC (50-200 Hz)
TIG-AC Pulse (0,1-5 Hz)
TIG-DC Pulse (0,1-5 Hz)
TIG-DC HF Pulse (50-2000 Hz)
MIX-PULSE
MMA welding

Recommended base metals

Structural steels
Cu-materials
CrNi steels
Duplex steels
Nickel-based materials
Aluminium materials

Recommended areas of use

Chemical plant construction
Steel construction
Maintenance & Repair
Machine construction
Pipeline construction

Standard equipment

HF / Liftarc Ignition
slope up / slope down
Pre gas / Post gas
Arc force + Pulse Arc force
Hot Start
Antistick function
S-mark, CE-mark
Thermal protection

Generator-compatible**
Digital Display
Pulse
Minimal Current from 4A
Remote control
Mix-Tig Function
JOB store facility

Options

Remote control
Foot remote control
Accessories-Set (TIG-torch, reducing valve, earth cable)
TIG-DC HF Pulse (50-2000 Hz)

| Omega Light | | 160 | |
|----------------|--------------------|-------------|---------|
| Art.Nr. | 1600160230 | | |
| U _i | (VAC) | MMA 230 | TIG 230 |
| | (Hz) | 50/60 | 50/60 |
| | (kVA) | 6 | 4 |
| | | T16 | T16 |
| DC | (A) | 140 | 160 |
| | ED / DC * (%) | 35 | 35 |
| | U ₀ (V) | 42 | 58 |
| AC | (A) | | 160 |
| | ED / DC * (%) | | 35 |
| | U ₀ (V) | | 58 |
| | (mm) | 315x170x385 | |
| | (kg) | 15 | |

* EN 60974.1 (10 min. 40 °C)

** Generator achievement = capacity x 2

| Omega | | 210 | |
|----------------|--------------------|-------------|---------|
| Art.Nr. | 1600210230 | | |
| U _i | (VAC) | MMA 230 | TIG 230 |
| | (Hz) | 50/60 | 50/60 |
| | (kVA) | 7,0 | 4,6 |
| | | T16 | T16 |
| DC | (A) | 210 | 210 |
| | ED / DC * (%) | 60 | 100 |
| | U ₀ (V) | 42 | 58 |
| AC | (A) | 150 | 210 |
| | ED / DC * (%) | 60 | 60 |
| | U ₀ (V) | 42 | 58 |
| | (mm) | 315x170x385 | |
| | (kg) | 15 | |

* EN 60974.1 (10 min. 40 °C)

Omega Light, Omega 210 Control panel

Processes Button

MMA (Omega Light - only DC)
TIG with HF Ignition
TIG Liftarc HF Ignition

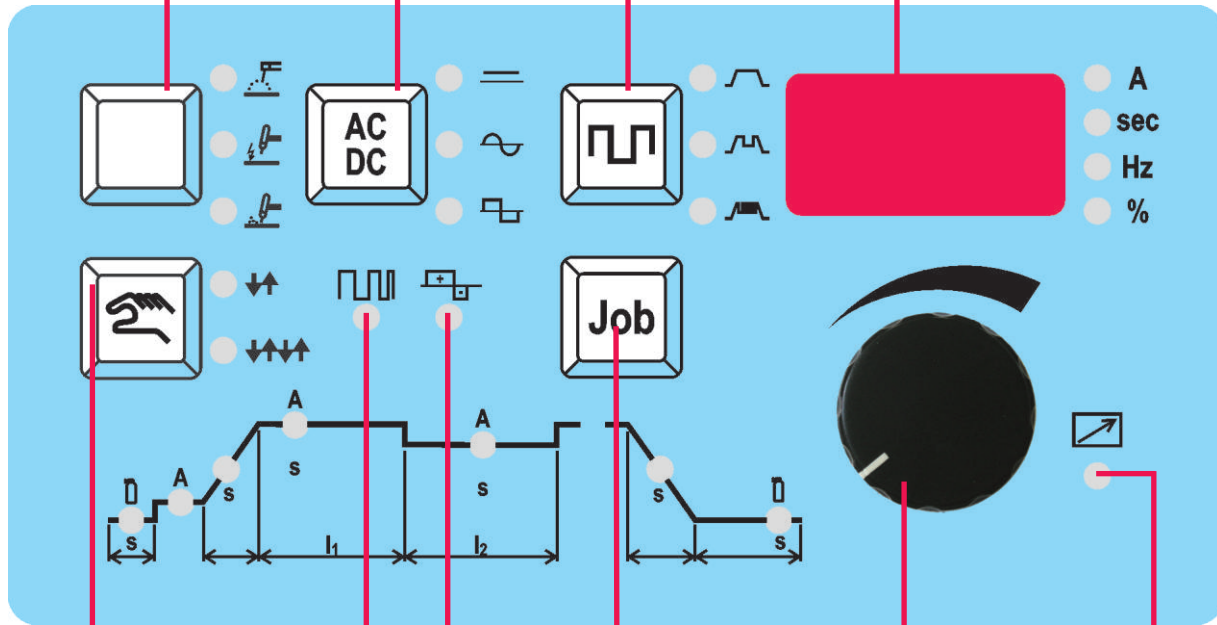
AC/DC Button

DC
AC sinus
(only Omega 210)
AC rectangular

PULSE Button

Standard (not Pulse)
PULSE Function
HF-PULSE (option)

Display



MODE Button

2-Tact
4-Tact

AC Frequency

AC Offset

JOB Button

Using this button it is possible to select and save 10 various jobs.

Adjust- and Confirm-Button

Remote control

TIG Inverter

MAHE
Made in Germany

Accessories

| | Art.Nr. | Description |
|----------------|---|--|
| TIG Set | 2116017400 | TIG-SET 1 / 140-170A gas cooled, 4m |
| | 2116017800 | TIG-SET 2 / 140-170A gas cooled, 8m |
| | 2116026400 | TIG-SET 3 / 190 - 240A gas cooled, 4m |
| | 2116026800 | TIG-SET 4 / 190 - 240A gas cooled, 8m |
| Remote Toolkey | Remote control for Delta, Beta and Omega 400V. | |
| | 2000100101 | RC 5 Remote control with 10m cable |
| | 2000100102 | RC 5 Remote control with 20m cable |
| | Foot remote control for Delta, Beta and Omega 400V. | |
| Fahrwagen | 2000101202 | FRC 5 Foot remote control with 10m cable |
| | 2000101203 | FRC 5 Foot remote control with 20m cable |
| | Separate Trolley for holding Delta, Beta and Gas Bottle up to 50 liters | |
| | 2112000101 | STT 20-1 Trolley STT 20-1 |